



TIAH FAQ: MENU LOADING

TIAH (All Versions)

ISSUE: TIAH MENU DOESN'T LOAD

There are a number of reasons why a menu file may not load in AutoCAD. The issues can range from number of support paths to registry issues.

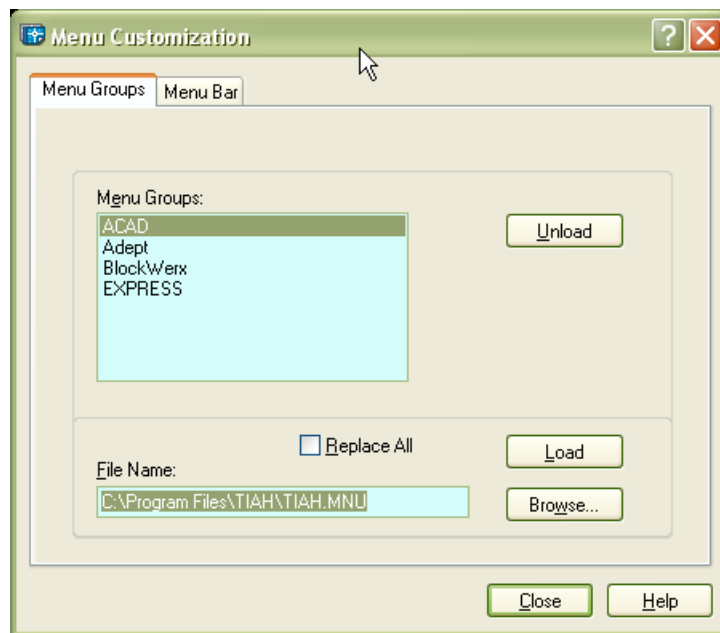
The following document sets out the procedure for loading the TIAH menu should it fail be loaded during the install process.

AUTOCAD 2004 & BELOW

At the command prompt, type **MENULOAD**

In the Menu Customization dialog, select the **Browse** button and browse to "*C:\Program Files\TIAH*"

Select the TIAH.MNU file and select **Open**



The TIAH menu should now show under the **File Name** section.

Ensure the **Replace All** checkbox is NOT checked (see above)

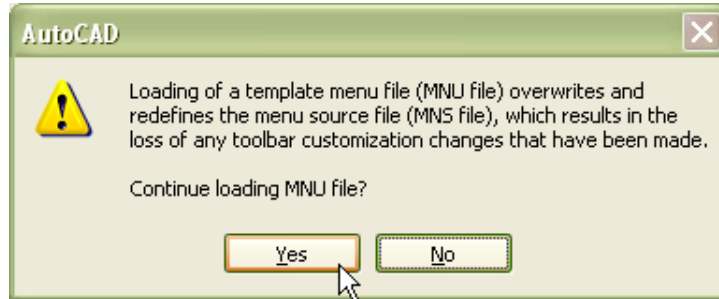
Select **Load**

You will then receive the following warning. Select **Yes**

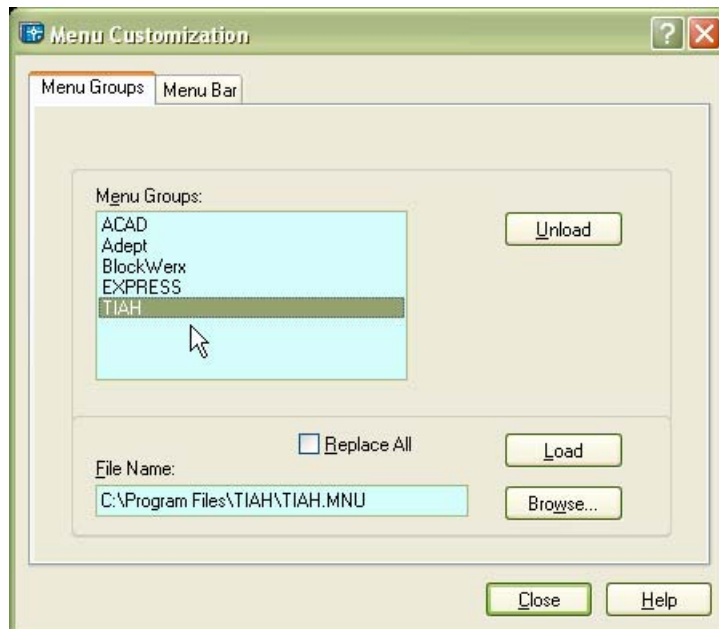
(This warning is only telling you that any changes made to the TIAH.MNS file will be lost. This WILL NOT in any way affect any of your other AutoCAD menu file settings.)



TIAH FAQ: MENU LOADING



TIAH will now appear under the **Menu Groups** section. Click once on it to select the TIAH menu group



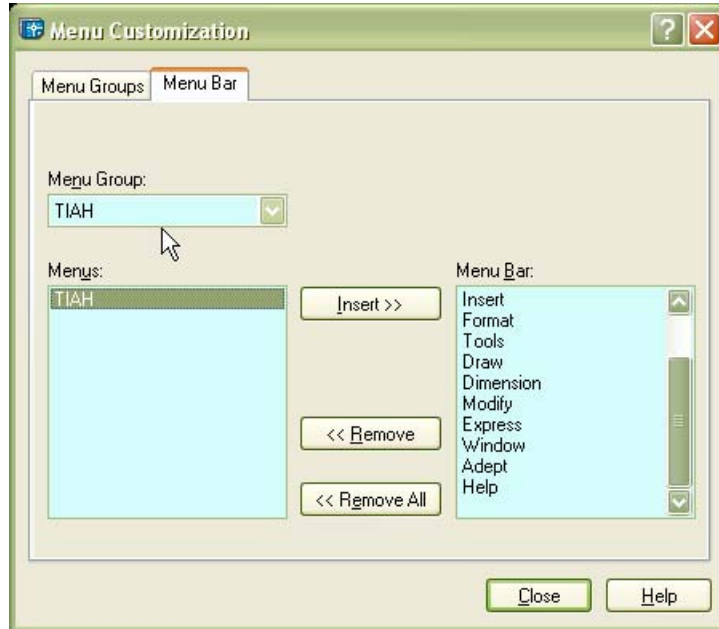
Now select the **Menu Bar** Tab.

TIAH should appear in both the **Menu Group** section and under the **Menus** section.

Click once on **TIAH** in the **Menus** section to highlight it.



TIAH FAQ: MENU LOADING

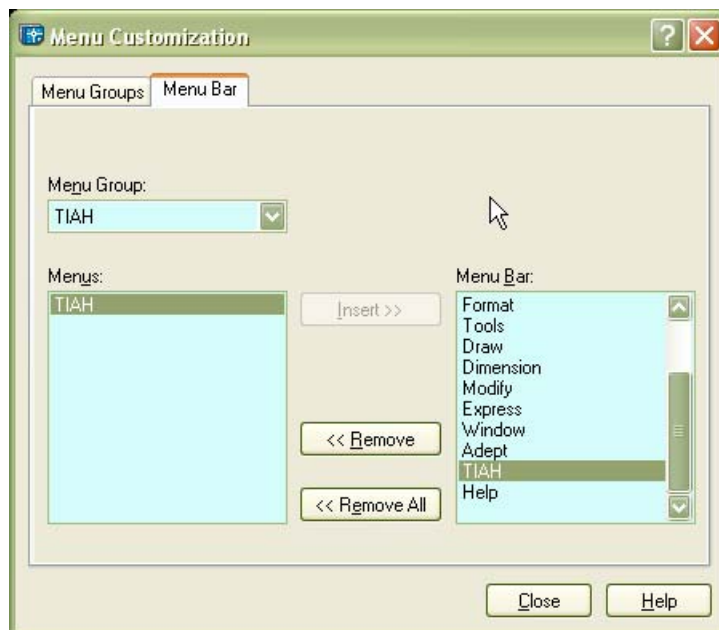


Note: AutoCAD will insert the TIAH menu immediately *before* the item selected in the **Menu Bar** section. If no item is selected, the TIAH menu will be placed as the *first* menu item.

Scroll to the end of the **Menu Bar** section and click once on **Help** to highlight it.

Now click on **Insert**.

The **TIAH** menu will now appear immediately before the **Help** menu.





TIAH FAQ: MENU LOADING

Close the dialog.
You are now ready to use TIAH.



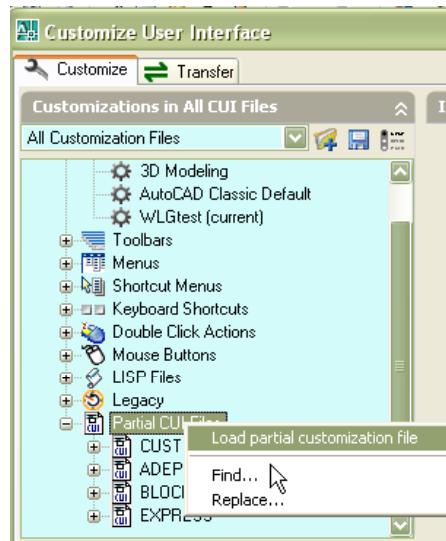
TIAH FAQ: MENU LOADING

AUTOCAD 2006 & ABOVE

At the AutoCAD command prompt type **CUI**

On the **Customize** Tab, select **Partial CUI Files**.

If the TIAH cui does not appear in the **Partial CUI Files** section then Right click on **Partial CUI Files** and select **Load Partial Customization File**.



Browse to “*C:\Program Files\TIAH*” and select the TIAH.CUI then select **Open**.

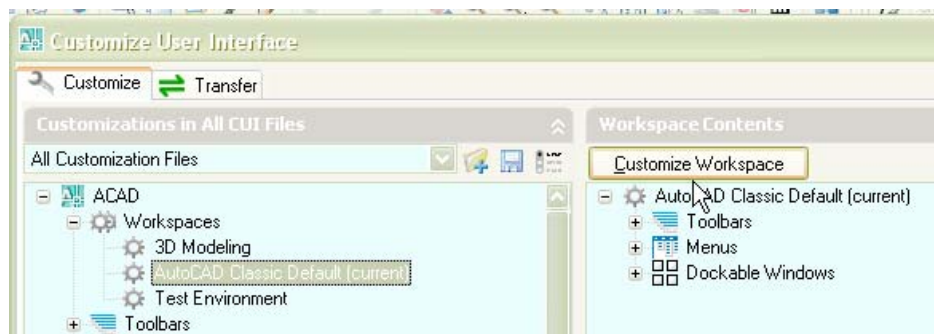
In the main dialog, click on **Apply**.

The TIAH menu should now appear on the AutoCAD menu bar.

You should find that the TIAH menu is now displayed at the end of the menu bar (after the Help menu), however, in some cases the TIAH menu may still not appear on the menu bar.

To resolve this:

Ensure that the *current workspace* is selected. Now, in the **Workspace Contents** window, click on **Customize Workspace**.



Expand the **Menus** section in your current workspace.

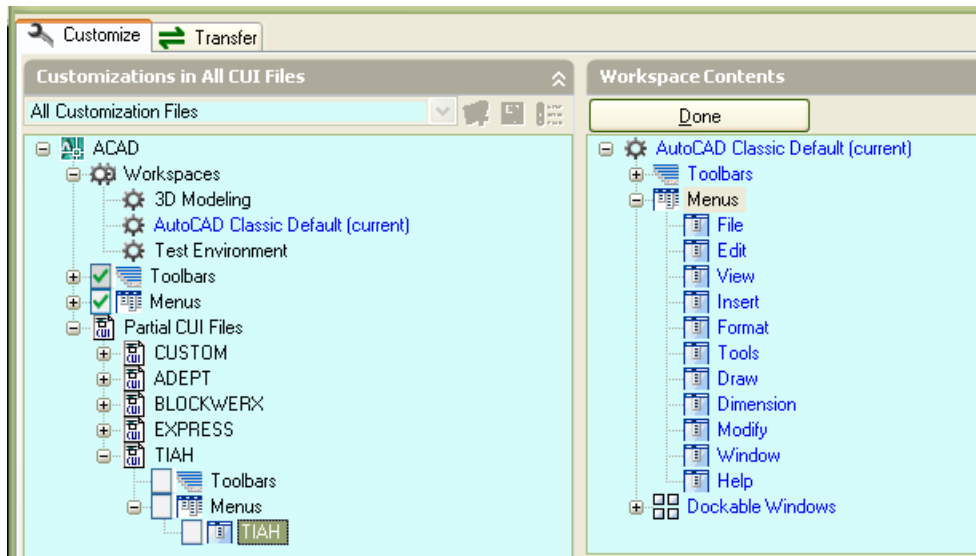
TIA HELPER

Traffic Impact Analysis Helper

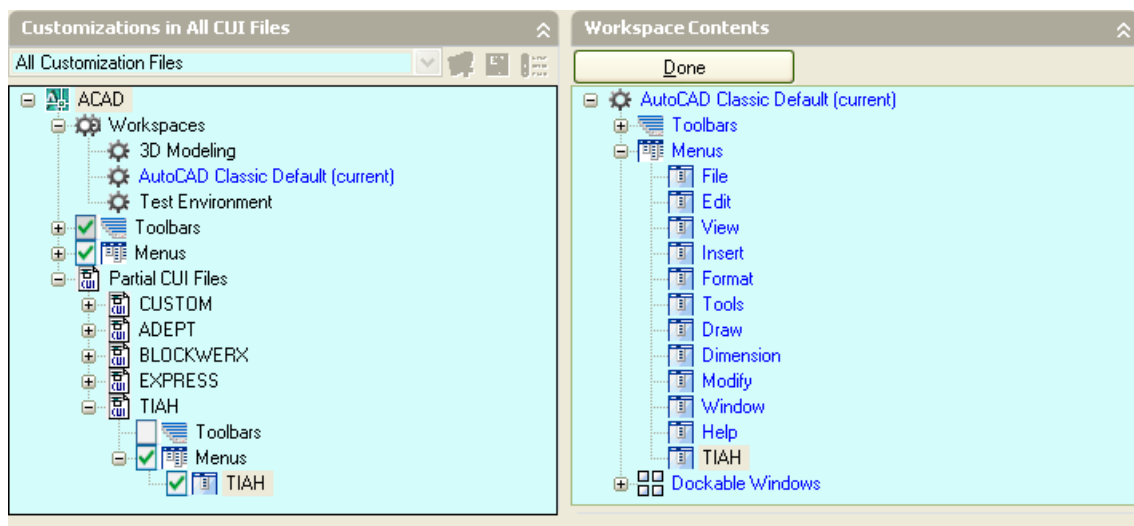


TIAH FAQ: MENU LOADING

Expand the menus section of the **Partial CUI Files** section so that you can see the TIAH menu



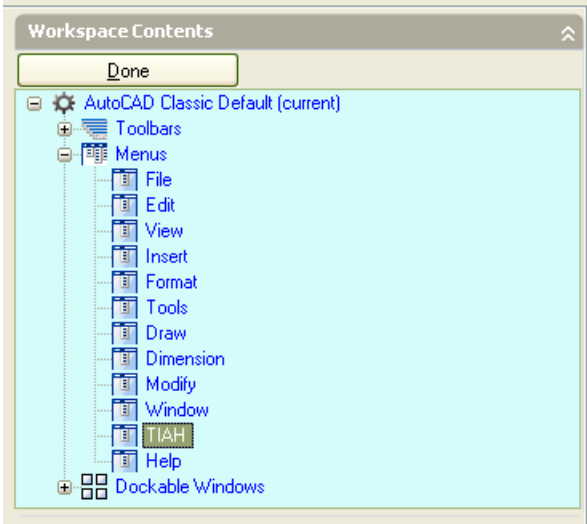
Click on the **checkbox** adjacent to the TIAH menu to add the TIAH menu to your *current workspace*. (see below)



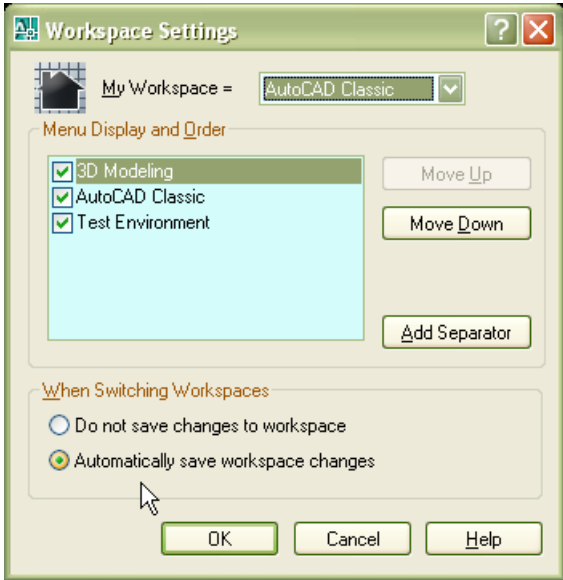
To change the position of the TIAH menu , in the **Workspace Contents** window, click on the TIAH menu and drag it to the desired position



TIAH FAQ: MENU LOADING



Click on **Done** when finished.
In the main CUI dialog, click on **OK**
The TIAH menu will now appear on the menu bar in the location you just specified.
Note: If you have not specified under **Workspaces** to **Automatically save workspace changes**, ensure you click on the Save button in the main CUI dialog.



You are now ready to use TIAH.